



Throwing open the gates to an exclusive world of elegance and luxurious living. Step into the luxury of prudently designed, completely modern apartment complex, naturally lit on all the three sides & delightfully private and spacious 2 and 3 bedroom homes.

A conveniently planned residential extravaganza, designed on the principles of vastu, with all modern amenities & delightful extras that meet the needs of your unique life style.

Your home at Kalyani's 'Beach Pearl' will never be a cause for concern ever, with Muda approved building plan, project meets the stringent standards of all government & civic bodies. Clear marketable titles completes the picture, promising you a hassle-free anchoring ground.

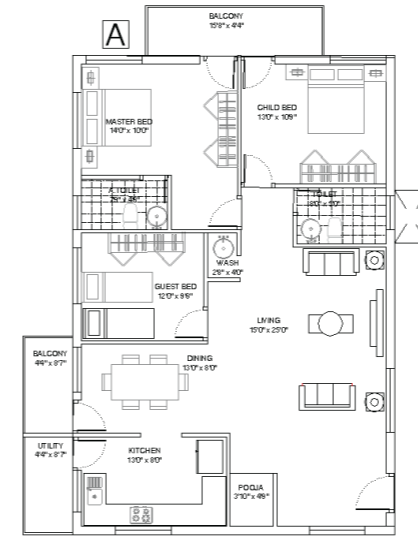
It's our privilege to give you a preview of our super luxurious apartment complex 'Beach Pearl'.

'Beach Pearl' is ideally located at Sadashiva Nagar, Surathkal with close proximity to the National Highway (apprx.600mtrs), to the Surathkal Bus Stand and also overlooking the beautiful Arabian Sea (apprx.250mtrs). Homes that are spacious enough to accommodate almost every impulse. In fact you can expect the very best in every aspect of 'Beach Pearl'.

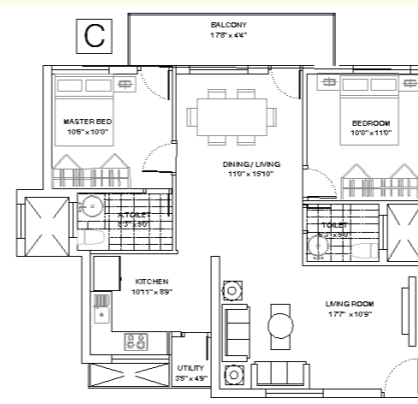


Master Plan → N

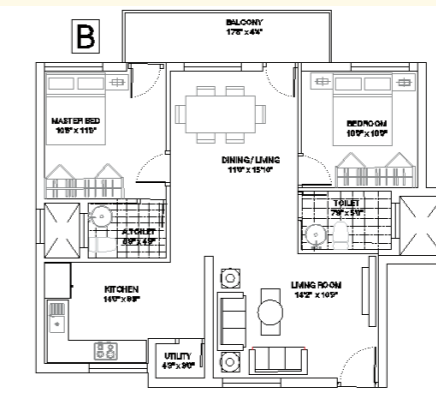
Type-A Typical 3 BHK Unit
Unit Area - 1,710 sft



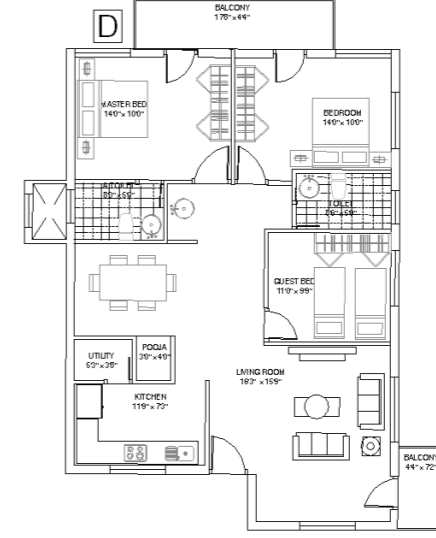
Type-C Typical 2 BHK Unit
Unit Area - 1,230 sft



Type-B Typical 2 BHK Unit
Unit Area - 1,180 sft



Type-D Typical 3 BHK Unit
Unit Area - 1,630 sft



specifications

Flooring:

Vitrified tiles in Living, Dining, Bedrooms and Kitchen. Anti-skid ceramic tiles in balconies and toilets.

Kitchen:

Granite kitchen platform, 24" high Dado tiles above cooking Platform, Stainless steel sink.

Toilet:

Hot and cold water mixers, Basin mixer, Floor-mounted European style WC with health faucets, Telephone shower in all bathrooms. (Jaguar or equivalent fittings). Provision for geyser.

Air Conditioning:

Provision for split air-conditioning for bedroom.

Telephone, intercom & cable:

Telephone point & Cable conduit provision in living and master bedroom.

Power Backup:

1 kva power back-up for all common areas and all apartments.

Facilities:

One high speed 6 passenger capacity automatic lift.

Water & Waste Management:

MWSSB water supply, Rain water harvesting facilities.